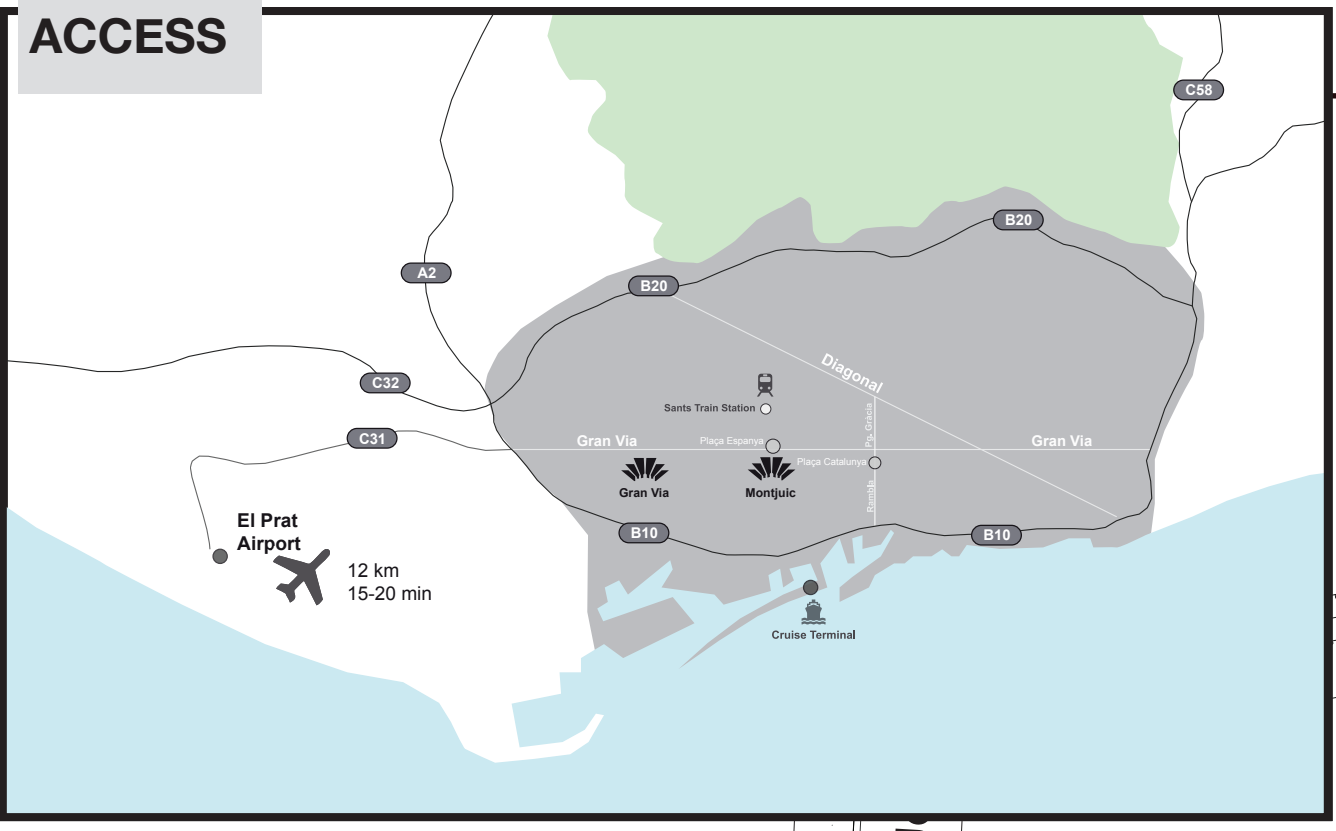
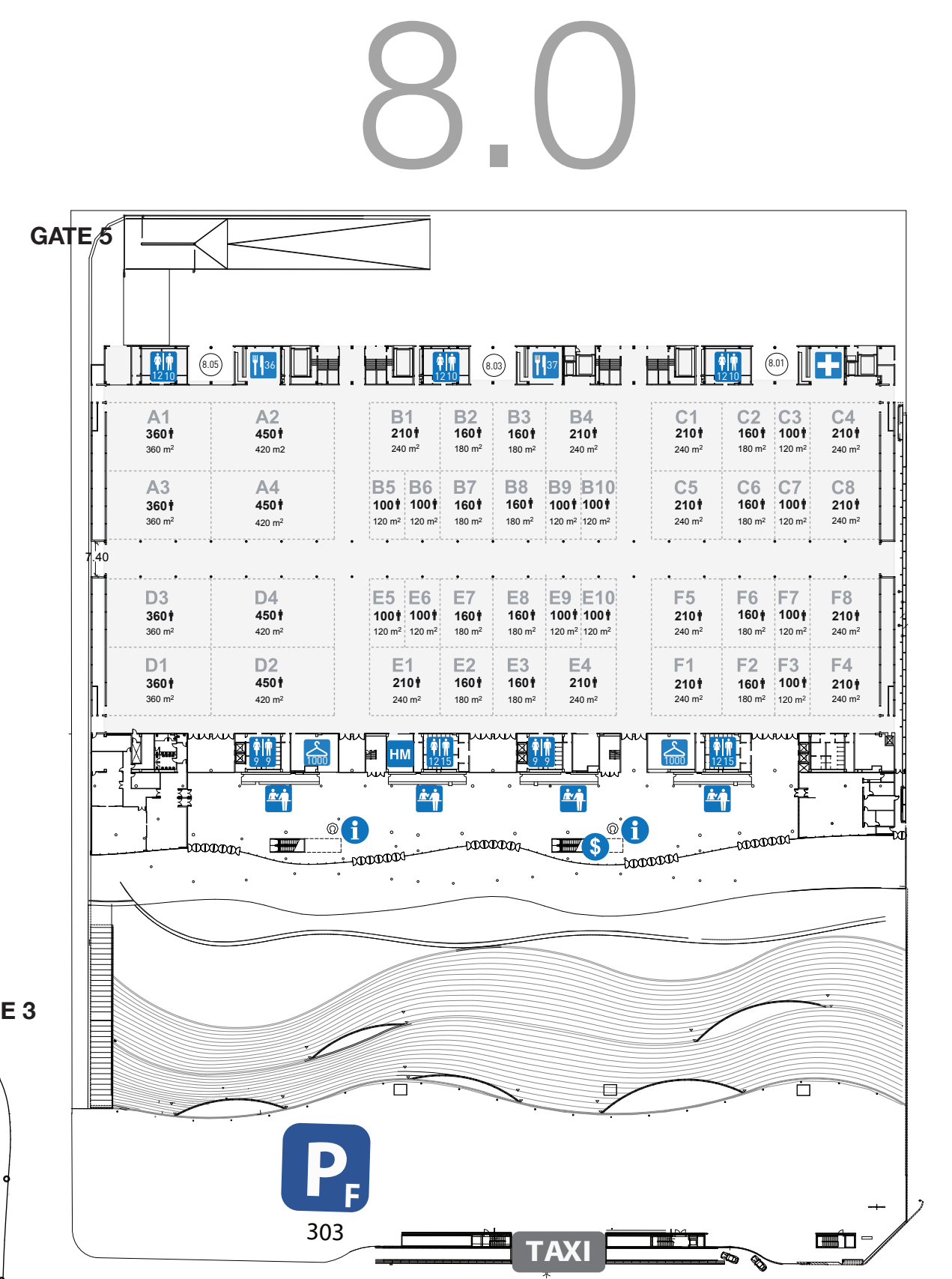
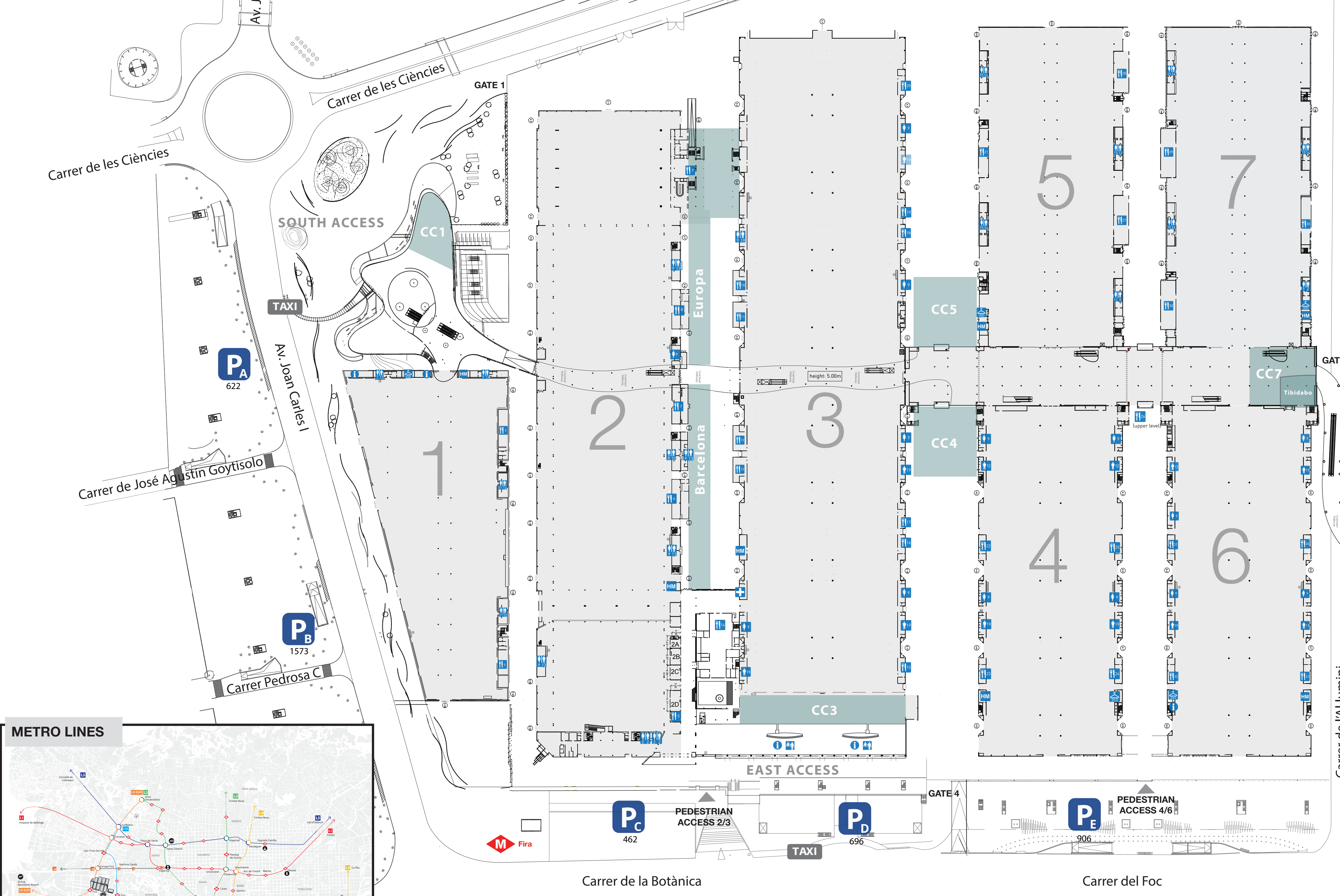


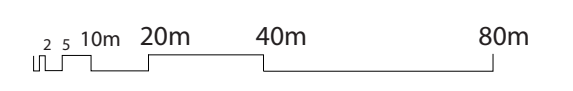
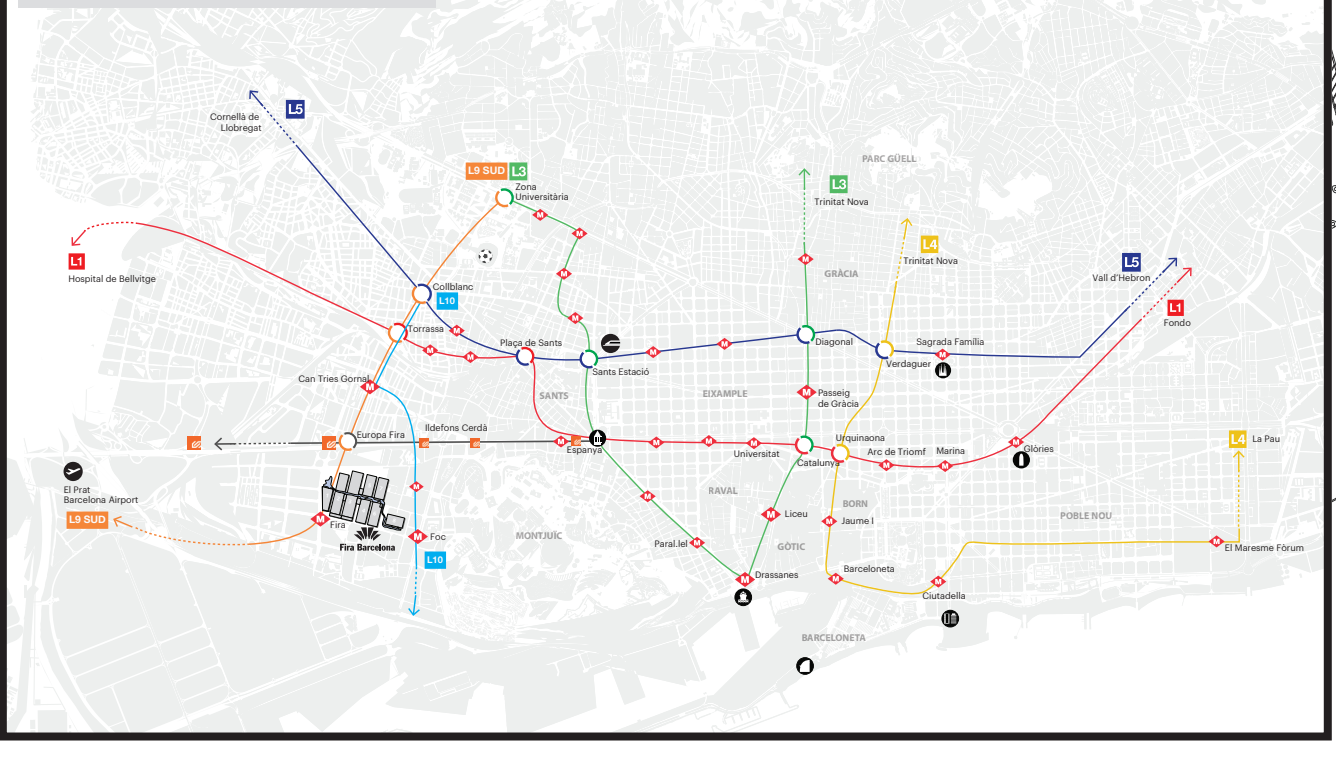
**ACCESS**



HALL	1	2	3	4	5	6	7	8.0	8.1
m <sup>2</sup>	14.000	32.000	43.000	20.000	17.000	20.000	17.000	13.800	12.700

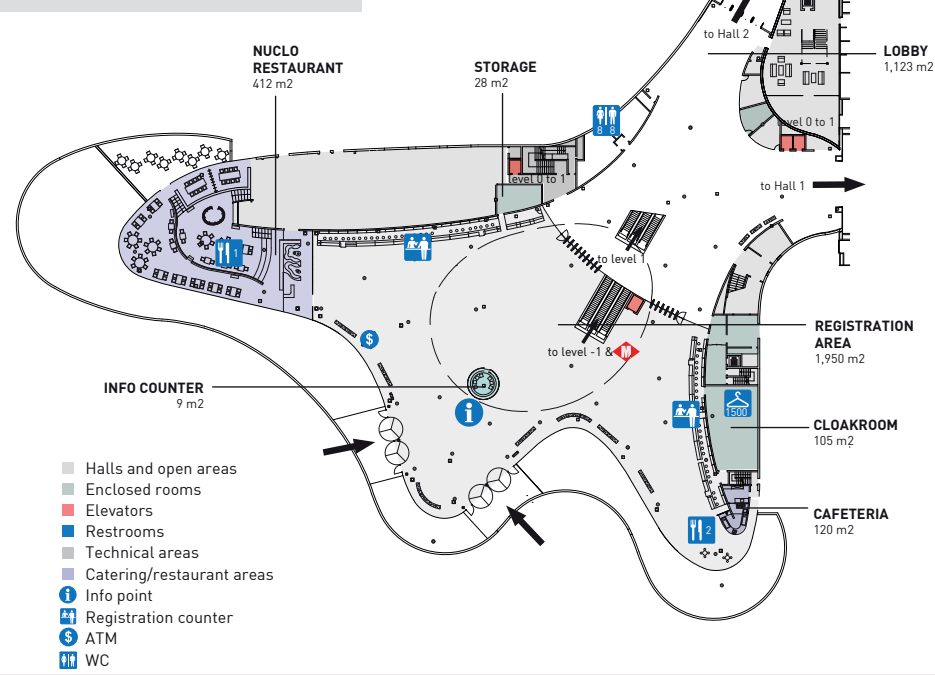


**METRO LINES**



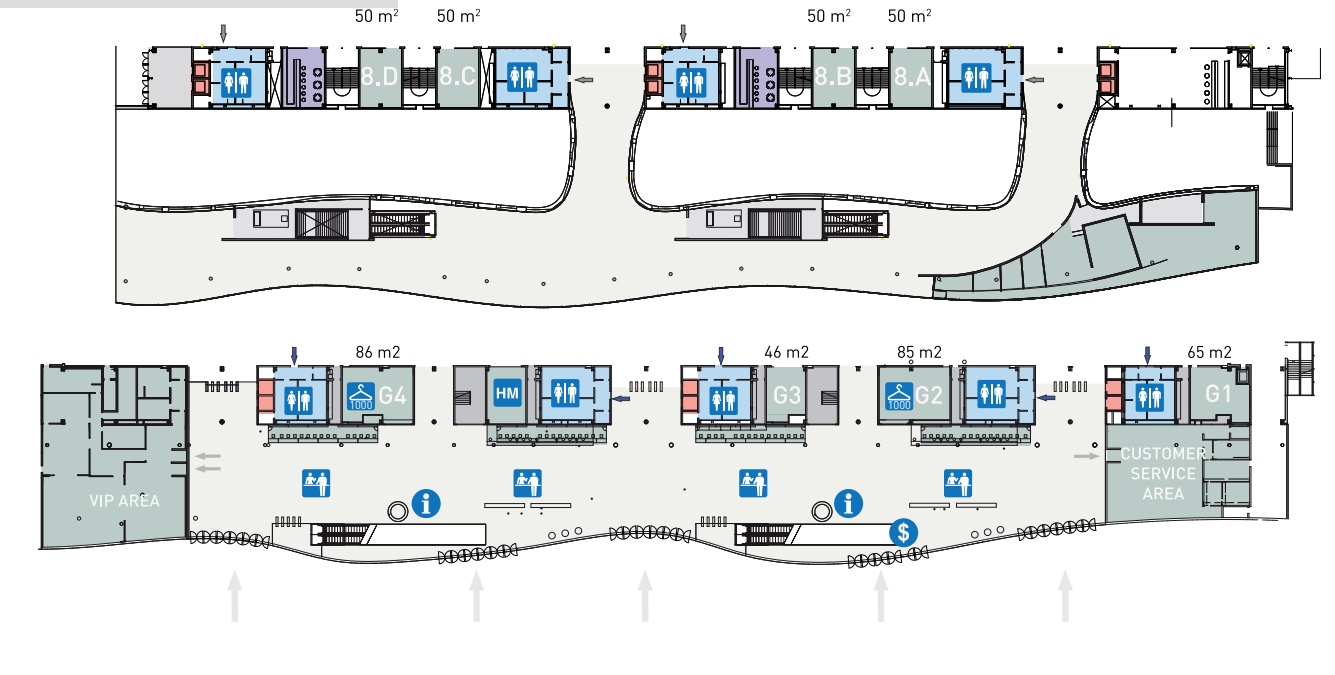


### SOUTH ENTRANCE



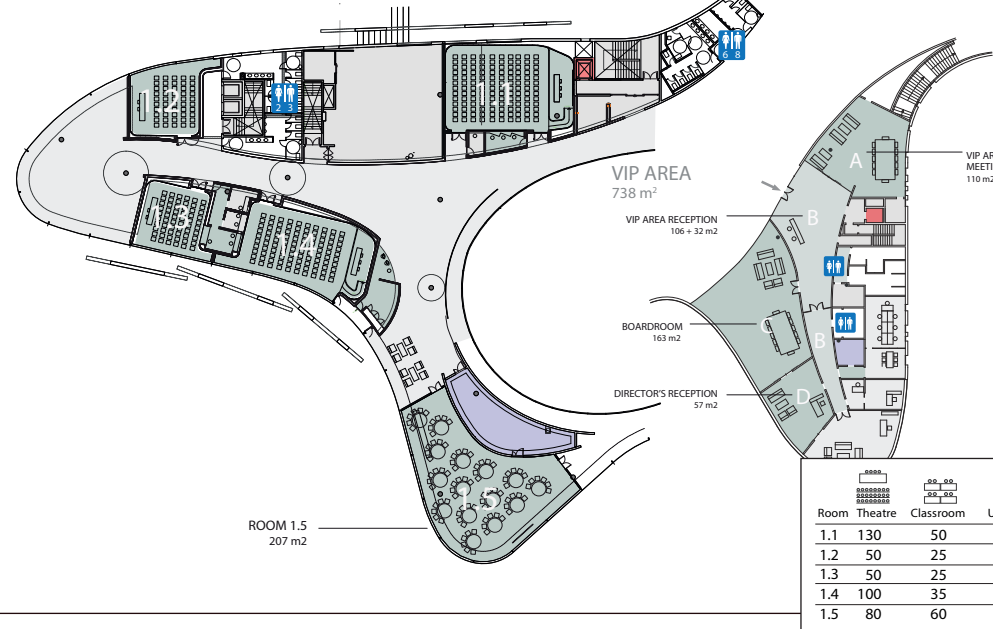
- Halls and open areas
- Enclosed rooms
- Elevators
- Restrooms
- Technical areas
- Catering/restaurant areas
- Info point
- Registration counter
- ATM
- WC

### NORTH ENTRANCE



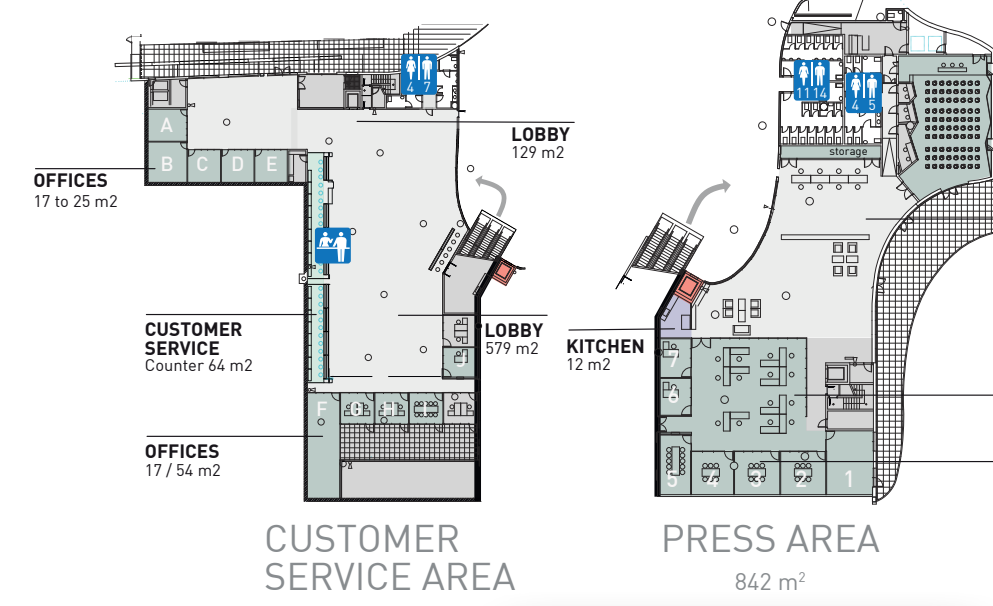
### CC1

#### CONFERENCE CENTER 1



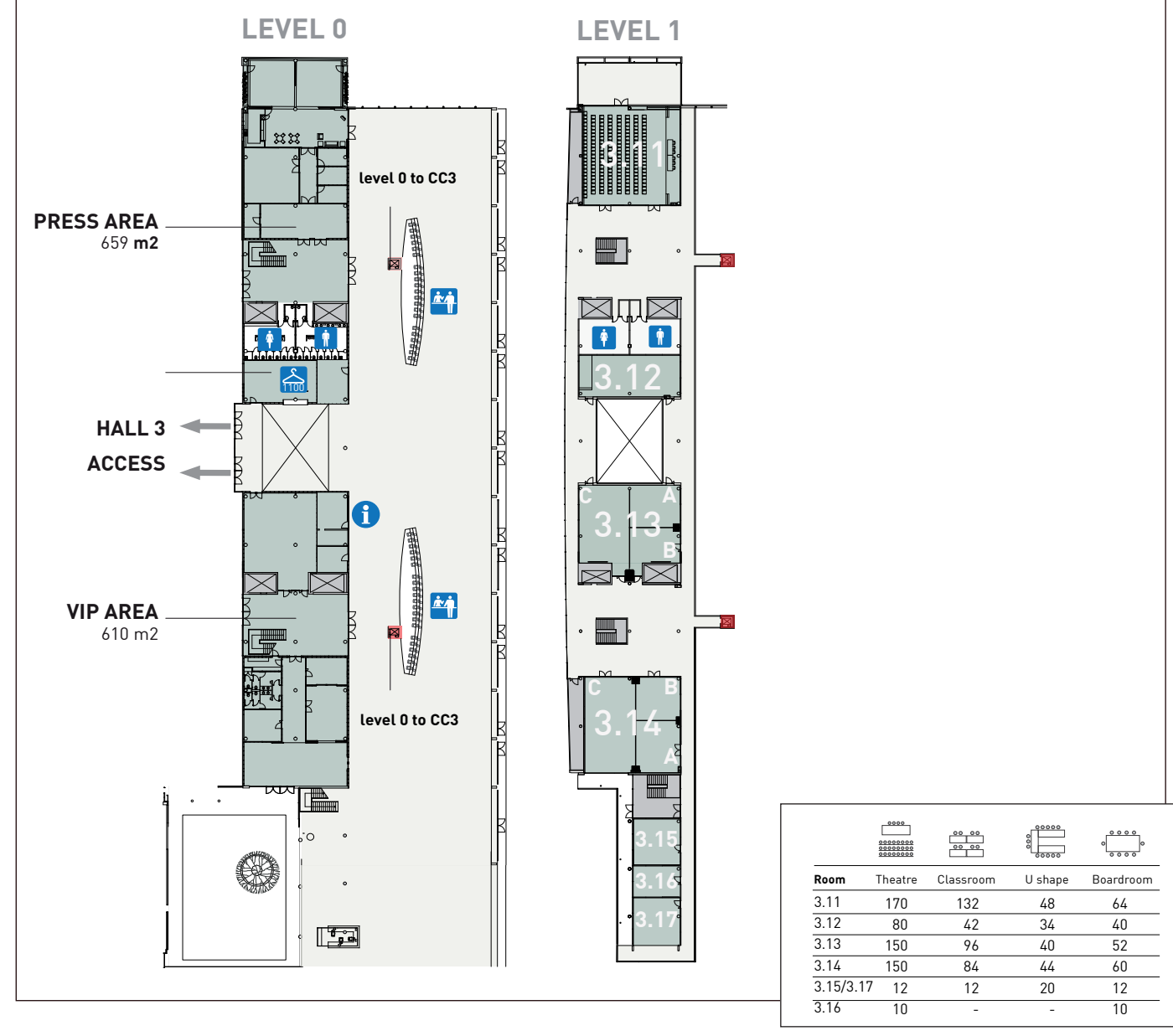
Room	Theatre	Classroom	U shape	Boardroom	Barquet	Cabnet
1.1	190	50	35	40	60	50
1.2	90	25	15	20	-	-
1.3	50	25	15	20	-	-
1.4	100	35	20	30	60	50
1.5	80	60	40	46	100	90

### SOUTH ENTRANCE LEVEL -1



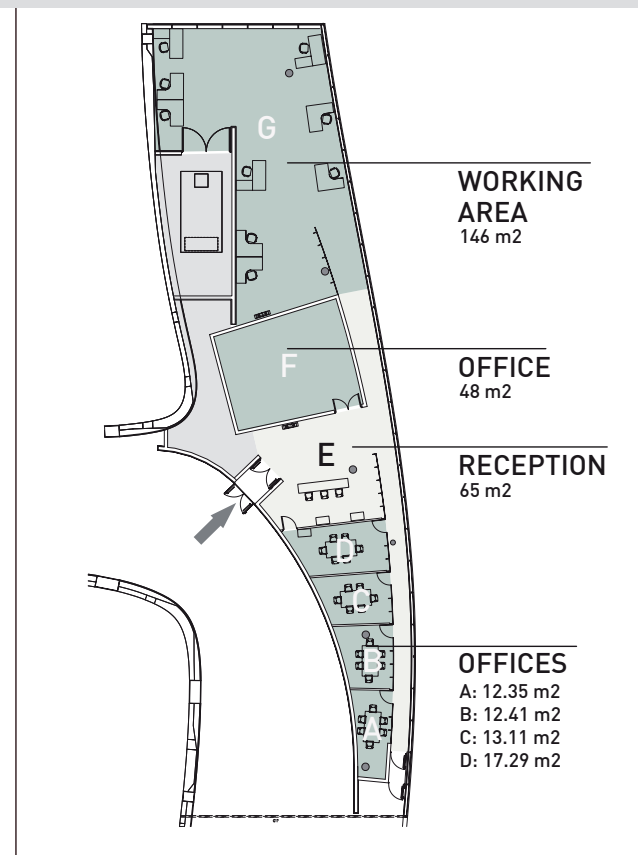
CUSTOMER SERVICE AREA 842 m<sup>2</sup>

### EAST ENTRANCE AND CC3

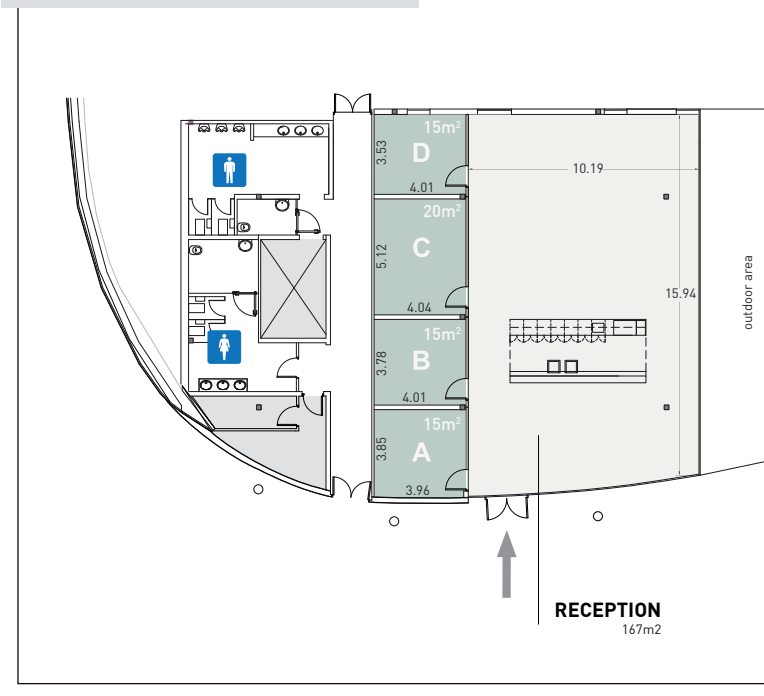


Room	Theatre	Classroom	U shape	Boardroom
3.11	170	122	48	44
3.12	80	42	34	40
3.13	150	96	40	52
3.14	150	84	44	60
3.15/2.17	12	12	20	12
3.16	10	-	-	10

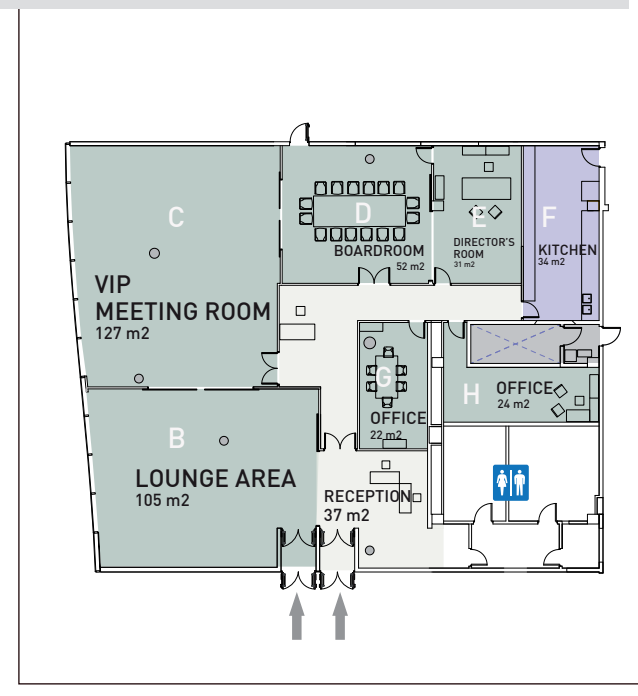
### PRESS AREA NORTH ENTRANCE



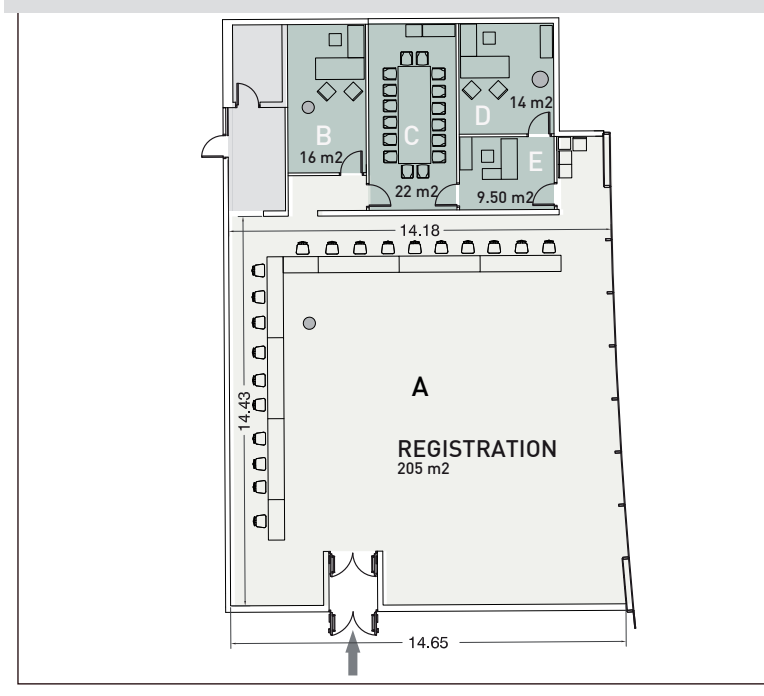
### TIBIDABO SUITE



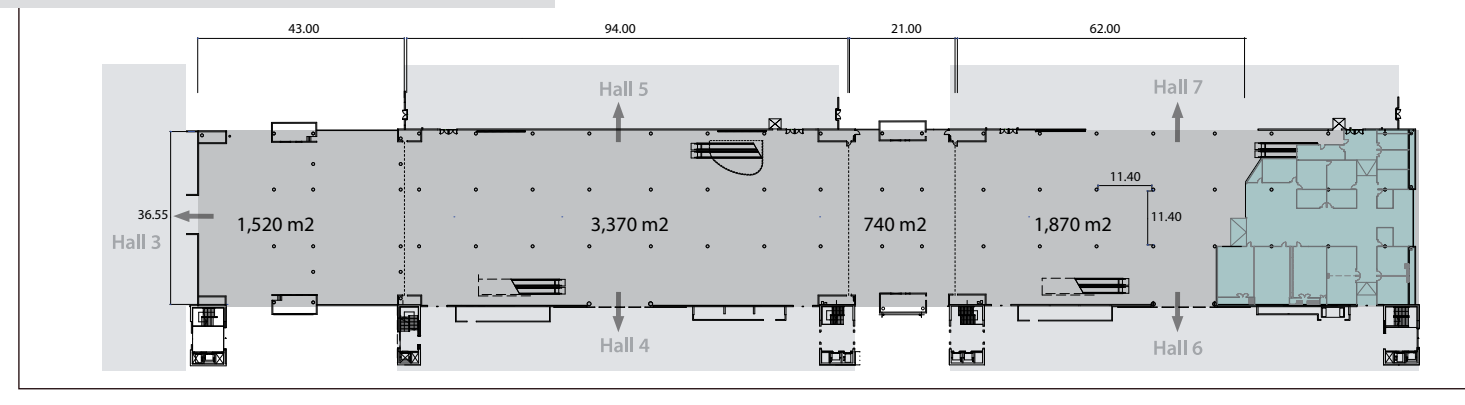
### VIP AREA NORTH ENTRANCE



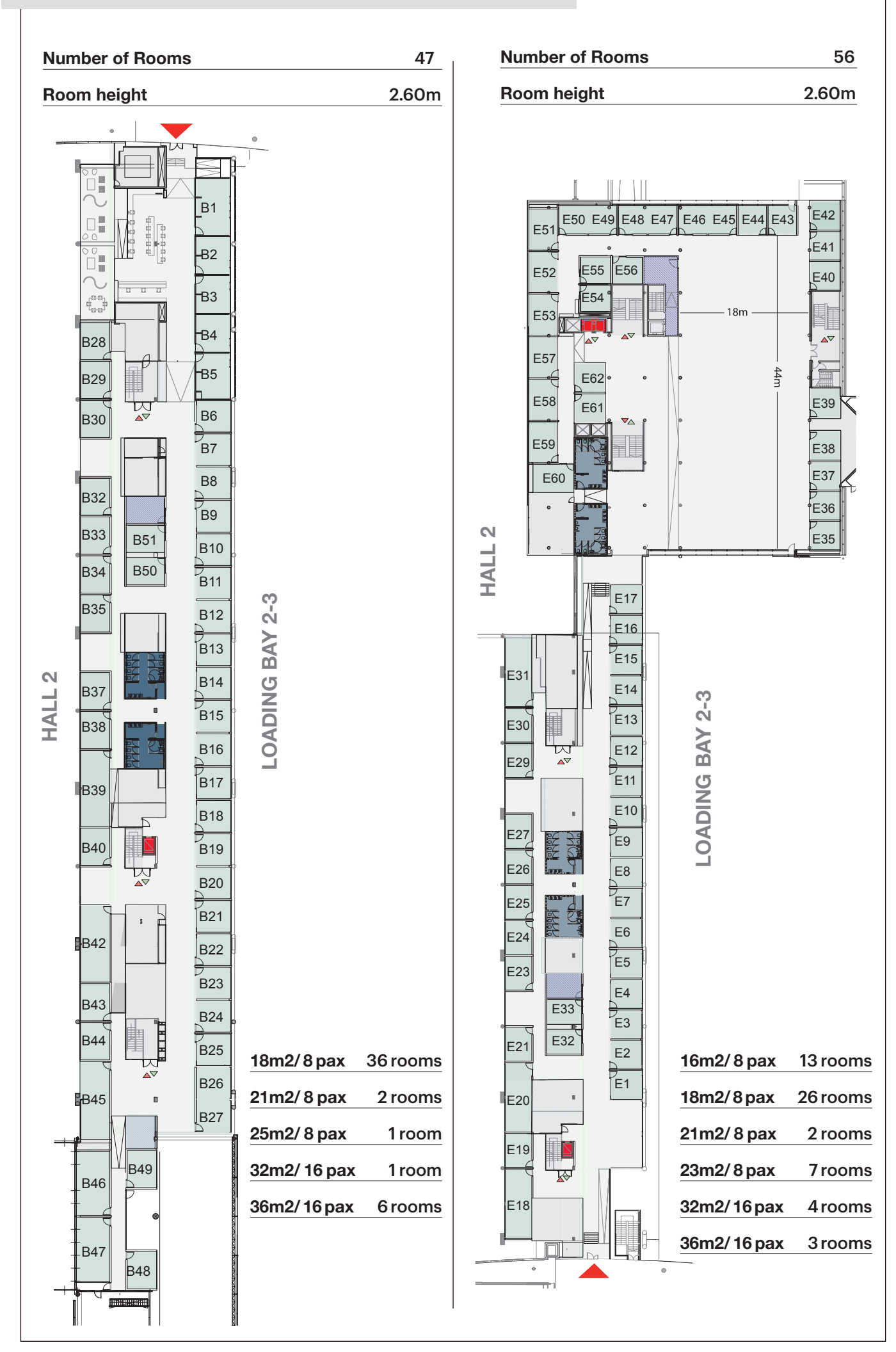
### CUSTOMER SERVICE NORTH ENTRANCE



### LINK HALLS 4, 5, 6 and 7



### BARCELONA AND EUROPA SUITES

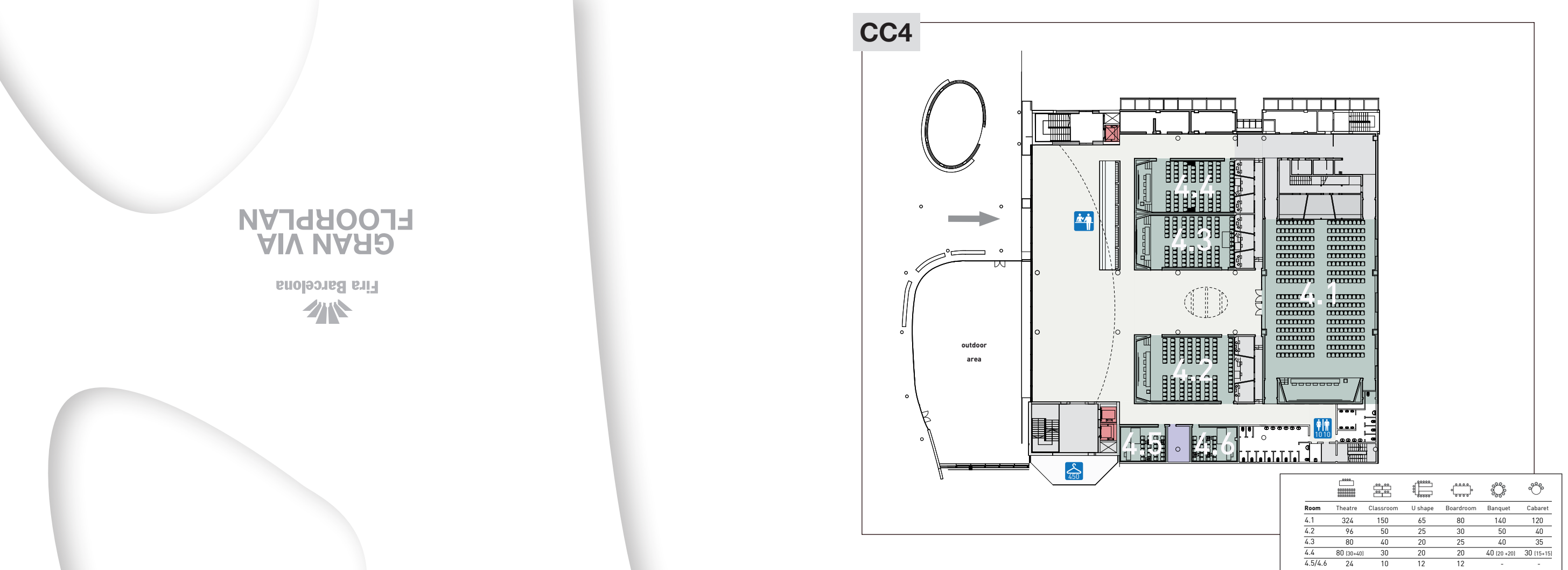


Number of Rooms 47  
Room height 2.60m

Number of Rooms 56  
Room height 2.60m

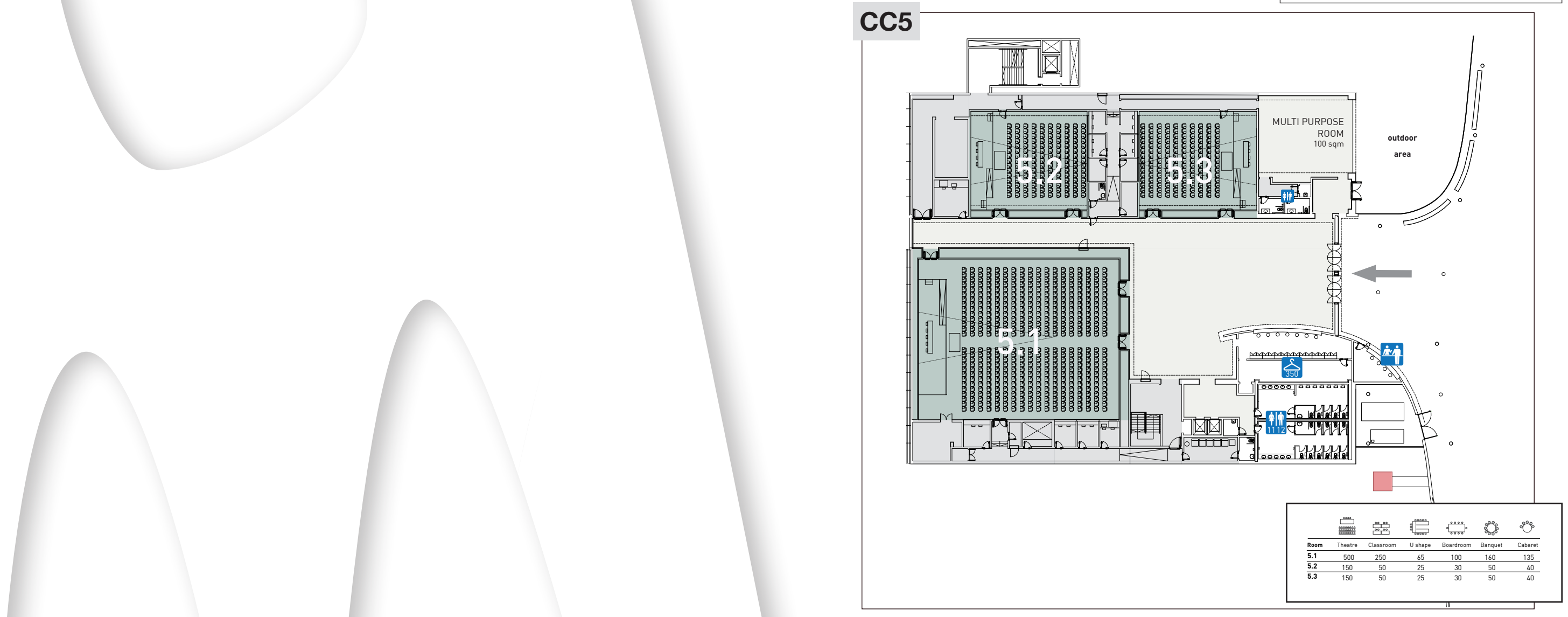
18m2/ 8 pax 36 rooms  
21m2/ 8 pax 2 rooms  
25m2/ 8 pax 1 room  
32m2/ 16 pax 1 room  
36m2/ 16 pax 6 rooms

16m2/ 8 pax 13 rooms  
18m2/ 8 pax 26 rooms  
21m2/ 8 pax 2 rooms  
23m2/ 8 pax 7 rooms  
32m2/ 16 pax 4 rooms  
36m2/ 16 pax 3 rooms



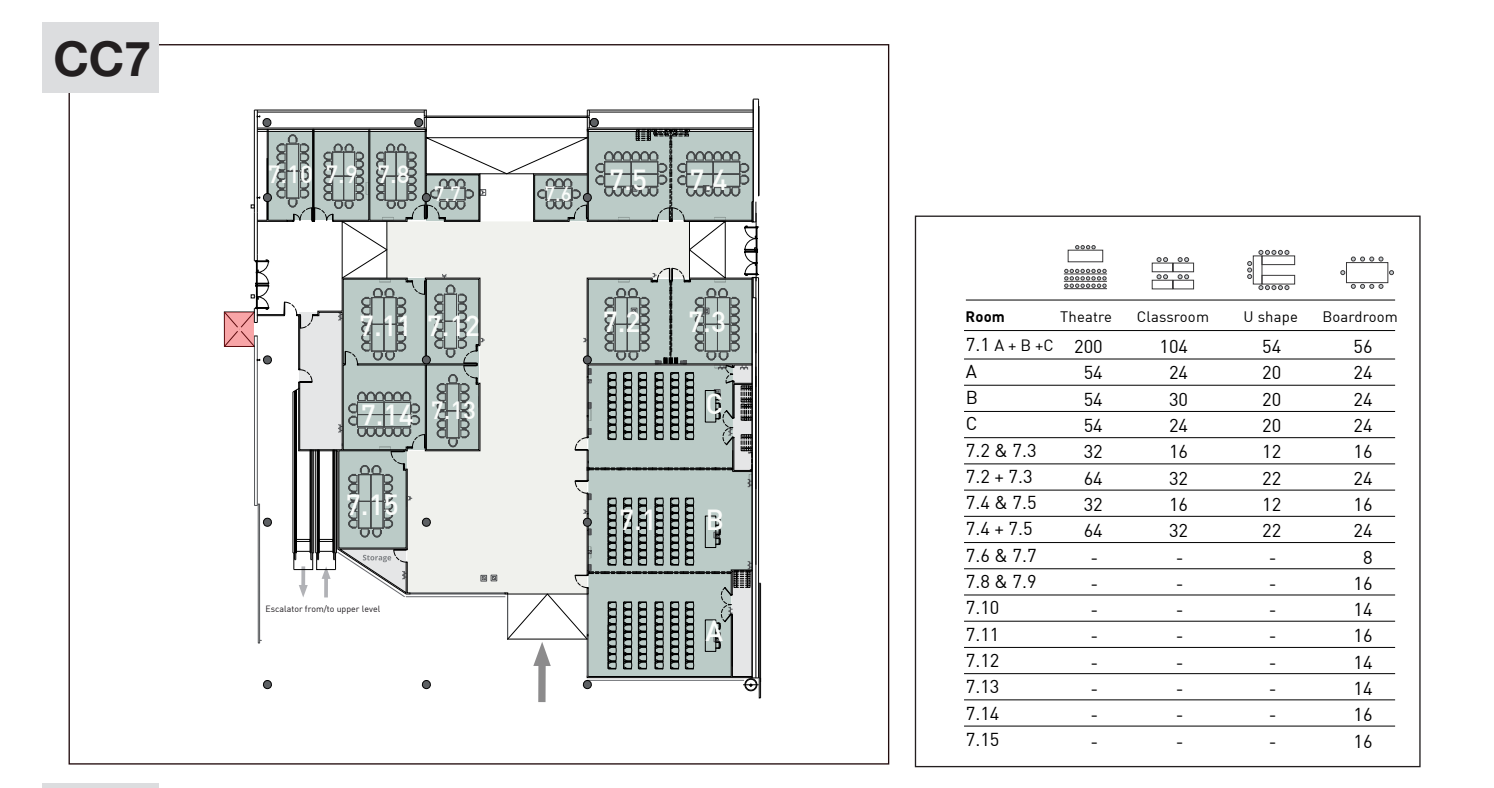
### CC4

Room	Theatre	Classroom	U shape	Boardroom	Barquet	Cabnet
4.1	230	150	65	80	140	120
4.2	90	50	25	30	50	40
4.3	80	40	20	25	40	35
4.4	80 (round)	30	20	20	40 (round)	30 (round)
4.5/4.6	24	10	12	12	-	-



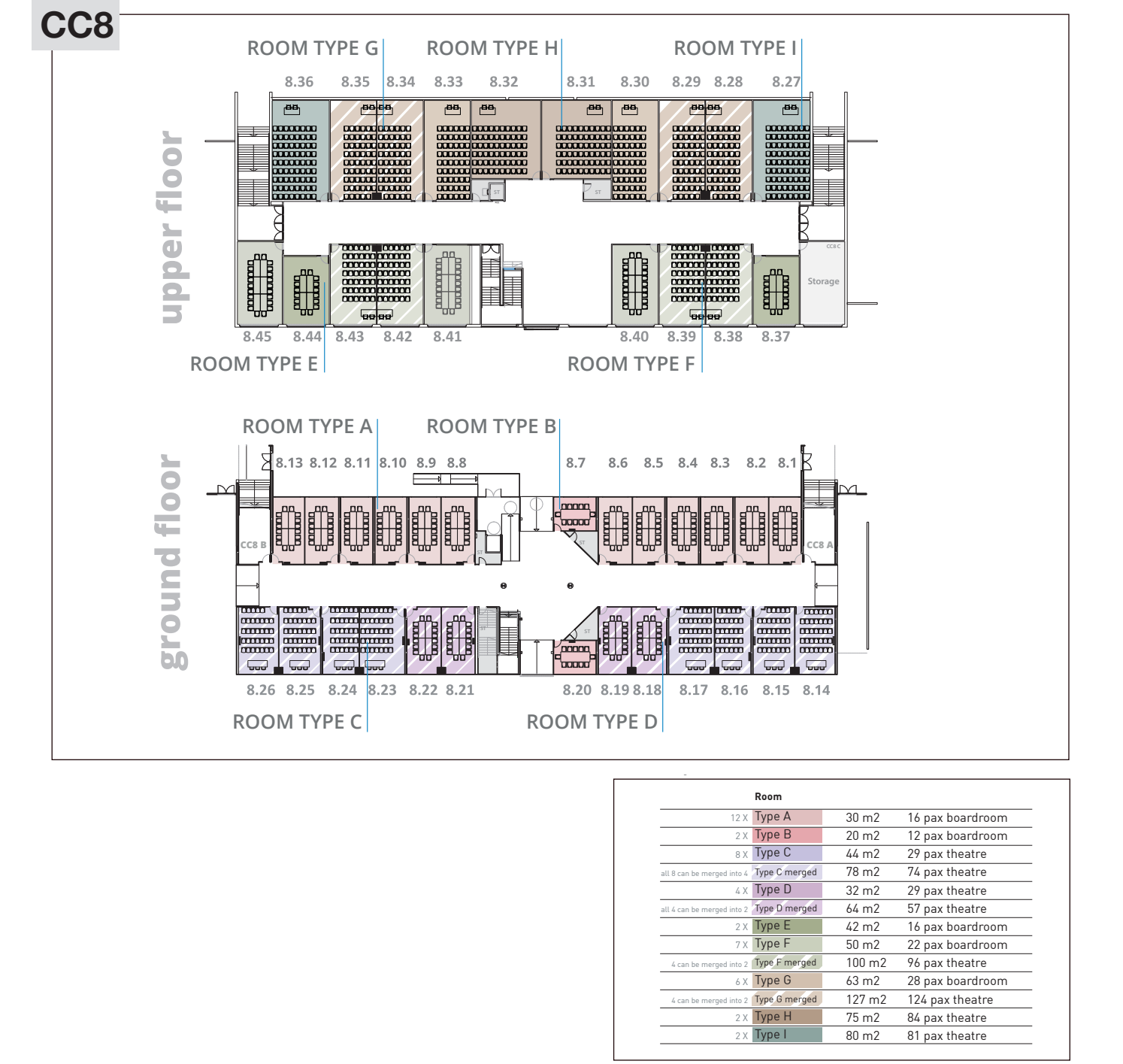
### CC5

Room	Theatre	Classroom	U shape	Boardroom	Barquet	Cabnet
5.1	100	70	35	40	100	130
5.2	150	70	35	40	50	40
5.3	110	50	25	30	50	40



### CC7

Room	Theatre	Classroom	U shape	Boardroom
7.1 A + B + C	200	104	54	56
A	54	24	20	24
B	54	30	20	24
C	54	24	20	24
7.2 & 7.3	32	16	12	16
7.2 + 7.3	64	32	22	24
7.4 & 7.5	32	16	12	16
7.4 + 7.5	64	32	22	24
7.6 & 7.7	-	-	-	8
7.8 & 7.9	-	-	-	16
7.10	-	-	-	16
7.11	-	-	-	16
7.12	-	-	-	16
7.13	-	-	-	16
7.14	-	-	-	16
7.15	-	-	-	16



### CC8

Room	Type	Area	Capacity
12.1	Type A	30 m <sup>2</sup>	16 pax boardroom
2.1	Type B	20 m <sup>2</sup>	12 pax boardroom
3.1	Type C	44 m <sup>2</sup>	29 pax theatre
4.1	Type D	32 m <sup>2</sup>	29 pax theatre
5.1	Type E	44 m <sup>2</sup>	29 pax theatre
6.1	Type F	42 m <sup>2</sup>	16 pax boardroom
7.1	Type G	50 m <sup>2</sup>	22 pax boardroom
8.1	Type H	100 m <sup>2</sup>	76 pax theatre
9.1	Type I	63 m <sup>2</sup>	29 pax boardroom
10.1	Type J	127 m <sup>2</sup>	124 pax theatre
11.1	Type K	75 m <sup>2</sup>	84 pax theatre
12.1	Type L	80 m <sup>2</sup>	81 pax theatre

Fira Barcelona  
GRAN VIA  
FLOOR PLAN

Fira Barcelona  
+34 93 233 20 00  
guestvents@firabarcelona.com